



Plusline Large

Plusline L 1000W R7s 230V 1CT

Mains-voltage linear lamp giving white halogen light

Product data

• General Characteristics

Cap-Base	R7s
Bulb	T4 [T4: .434 inch / 11mm]
Bulb Finish	Clear
Operating Position	p4 [Parallel +/-4D or Horizontal(HOR)]
Life to 50% failures	2000 hr
Nominal Lifetime	2000 hr
Rated Lifetime (hours)	2000 hr
Rated Lifetime (years)	2 an

• Light Technical Characteristics

Color Rendering Index	100 Ra8
Color Temperature	2900 K
Color Temperature Technical	2900 K
Luminous flux lamp	21500 Lm
Rated Luminous Flux	21500 Lm
Luminous Efficacy	21.5 Lm/W
Lamp LLMF - end nominal lifetime	80 (min) %

• Electrical Characteristics

Rated Wattage	1000.0 W
Lamp Wattage	1000 W
Lamp Wattage Technical	1000.0 W
Power Factor	1 -
Voltage	230 V
Lamp Current	4.35 A
Dimmable	Yes

Starting Time	0.0 s
Warm-up Time to 60% Light Outp	instant full light

• Environmental Characteristics

Energy Efficiency Label (EEL)	C
Energy consumption kWh/1000h	1000 kWh

• Measuring Conditions

Switching cycle	8000X
-----------------	-------

• Luminaire Design Requirements

Pinch Temperature	350 (max) C
Bulb Temperature	900 (max) C

• Product Dimensions

Insertion Length B	184.1 (min), 185.7 (nom), 187.3 (max) mm
Overall Length C	189.1 (max) mm
Diameter D	11 (max) mm

• Product Data

Order code	923932143241
Full product code	923932143241
Full product name	Plusline L 1000W R7s 230V 1CT
Order product name	Plusline L 1000W R7s 230V 1CT/10
Pieces per pack	1
Packing configuration	10
Packs per outerbox	10

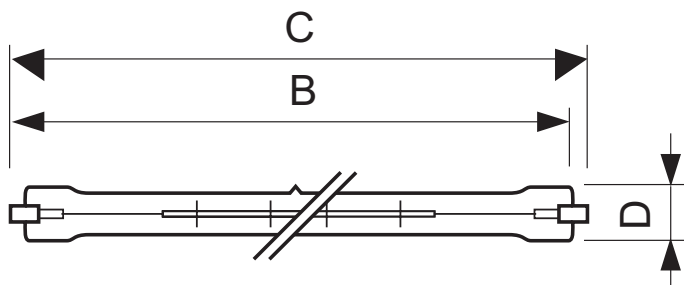
PHILIPS

Plusline Large

Bar code on pack - EAN1 8727900808513
Bar code on outerbox - EAN3 8727900808520

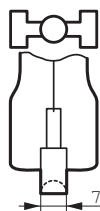
Logistic code(s) - 923932143241
12NC
ILCOS code HDG//RS-1000-230-R7s-185,7
Net weight per piece 0.016 kg

Dimensional drawing



Plusline L 1000W R7s 230V 1CT

Product	B (Min)	B (Norm)	B (Max)	C (Max)	D (Norm)	D (Max)
DEBig 1000W R7s 230V T11 CL	184.1	185.7	187.3	189.1	-	11



R7s



© 2014 Koninklijke Philips N.V. (Royal Philips)
All rights reserved.

Specifications are subject to change without notice. Trademarks are the property of Koninklijke Philips N.V. (Royal Philips) or their respective owners.

www.philips.com/lighting

2014, October 31
data subject to change